



USAID | GHANA
FROM THE AMERICAN PEOPLE

SUSTAINABLE FISHERIES MANAGEMENT PROJECT (SFMP)

Monitoring of Seasonal Closed Area Implementation within the Pra Estuary Co-management Area



JUNE 2018

THE
UNIVERSITY
OF RHODE ISLAND
GRADUATE SCHOOL
OF OCEANOGRAPHY



This publication is available electronically in the following locations:

The Coastal Resources Center

http://www.crc.uri.edu/projects_page/ghanasfmp/

Ghanalinks.org

<https://ghanalinks.org/elibrary> search term: SFMP

USAID Development Clearing House

<https://dec.usaid.gov/dec/content/search.aspx> search term: Ghana SFMP

For more information on the Ghana Sustainable Fisheries Management Project, contact:

USAID/Ghana Sustainable Fisheries Management Project

Coastal Resources Center

Graduate School of Oceanography

University of Rhode Island

220 South Ferry Rd.

Narragansett, RI 02882 USA

Tel: 401-874-6224 Fax: 401-874-6920 Email: info@crc.uri.edu

Citation: Friends of the Nation (2018). Monitoring of Seasonal Closed Area Implementation within the Pra Estuary Co-management Area. The USAID/Ghana Sustainable Fisheries Management Project (SFMP). Narragansett, RI: Coastal Resources Center, Graduate School of Oceanography, University of Rhode Island and Friends of the Nation. GH2014_xxx000_[FoN]. 13 pp.

Authority/Disclaimer:

Prepared for USAID/Ghana under Cooperative Agreement (AID-641-A-15-00001), awarded on October 22, 2014 to the University of Rhode Island, and entitled the USAID/Ghana Sustainable Fisheries Management Project (SFMP).

This document is made possible by the support of the American People through the United States Agency for International Development (USAID). The views expressed and opinions contained in this report are those of the SFMP team and are not intended as statements of policy of either USAID or the cooperating organizations. As such, the contents of this report are the sole responsibility of the SFMP team and do not necessarily reflect the views of USAID or the United States Government.

Cover photo: Seasonal closed area showing painted bamboo sticks used to demarcate the area (Credit: Friends of the Nation)

Detailed Partner Contact Information:

USAID/Ghana Sustainable Fisheries Management Project (SFMP)
10 Obodai St., Mempeasem, East Legon, Accra, Ghana

Telephone: +233 0302 542497 Fax: +233 0302 542498

Maurice Knight	Chief of Party maurice@crc.uri.edu
Kofi Agbogah	Senior Fisheries Advisor kagbogah@henmpoano.org
Nii Odenkey Abbey	Communications Officer nii.sfmp@crcuri.org
Bakari Nyari	Monitoring and Evaluation Specialist hardinyari.sfmp@crcuri.org
Brian Crawford	Project Manager, CRC brian@crc.uri.edu
Ellis Ekekpi	USAID AOR (acting) eekekpi@usaid.gov

Kofi Agbogah
kagbogah@henmpoano.org
Stephen Kankam
skankam@henmpoano.org
Hen Mpoano
38 J. Cross Cole St. Windy Ridge
Takoradi, Ghana
233 312 020 701

Resonance Global
(formerly SSG Advisors)
182 Main Street
Burlington, VT 05401
+1 (802) 735-1162
Thomas Buck
tom@ssg-advisors.com

Andre de Jager
adejager@snvworld.org
SNV Netherlands Development Organisation
#161, 10 Maseru Road,
E. Legon, Accra, Ghana
233 30 701 2440

Victoria C. Koomson
cewefia@gmail.com
CEWEFIA
B342 Bronyibima Estate
Elmina, Ghana
233 024 427 8377

Donkris Mevuta
Kyei Yamoah
info@fonghana.org
Friends of the Nation
Parks and Gardens
Adiembra-Sekondi, Ghana
233 312 046 180

Lydia Sasu
daawomen@daawomen.org
DAA
Darkuman Junction, Kaneshie Odokor
Highway
Accra, Ghana
233 302 315894

For additional information on partner activities:

CRC/URI:	http://www.crc.uri.edu
CEWEFIA:	http://cewefia.weebly.com/
DAA:	http://womenthrive.org/development-action-association-daa
Friends of the Nation:	http://www.fonghana.org
Hen Mpoano:	http://www.henmpoano.org
Resonance Global:	https://resonanceglobal.com/
SNV:	http://www.snvworld.org/en/countries/ghana

ACRONYMS

FoN	Friends of the Nation
SFMP	Sustainable Fisheries Management Project
SDA	Shama District Assembly

TABLE OF CONTENTS

CONTENTS

.....	i
Acronyms.....	iii
TABLE OF CONTENTS.....	iv
LIST OF FIGURES	v
SECTION 1 Introduction.....	1
1.1 Objectives of the Monitoring Visit	5
1.2 Expected outcomes.....	5
SECTION 2 Observations of monitoring visit.....	5

LIST OF FIGURES

Figure 1: Map showing a designated management area of 3,190 Hectares	2
Figure 2: Map showing seven breeding grounds within the Pra fisheries management area	3
Figure 3: Map showing a seasonal closed area (shaded yellow)	4
Figure 4: Beginning monitoring visits with interactions between FoN field officer, auditors and community representative	5
Figure 5: Picture Showing painted bamboo sticks that were used to demarcate the closed area	6
Figure 6: Showing zoomed picture with no fisherman observed in the closed area.....	7

SECTION 1 INTRODUCTION

As part of efforts to manage the fisheries resources in the Pra estuary and its associated wetlands, a total water area of 3,190 Hectares (figure 1) has been identified and demarcated by resource users in 11 communities surrounding the estuary and associated wetlands, as a fisheries management area. Within this demarcated area, seven breeding grounds (figure 2) were noted by the resource users to concentrate management actions. Amongst the seven breeding grounds, one area considered as very viable and where three tributaries of the Pra River pass, was selected to start management actions. Lessons are expected to be learnt from this area so as to effectively implement management measures in the other breeding grounds with time. The selected area (figure 3) is closed for fishing activities for three months (May to July) within which resource users have indicated most Tilapia species are 'pregnant' when caught.

To effectively enforce this seasonal closure, a 15-member committee selected by the resource users have been tasked to monitor the area from time to time and report appropriately. In order to support this monitoring task, and to validate information coming in from the committee members, an officer from Friends of the Nation (FoN), together with one assembly member from the Shama District Assembly (SDA), went on an un-announced monitoring visit to the seasonal closed area on Wednesday June 6, 2018. Two officers from an audit team, auditing FoN's activities under the Sustainable Fisheries Management (SFMP) Project joined the monitoring team to the field to observe what was taking place on the field.

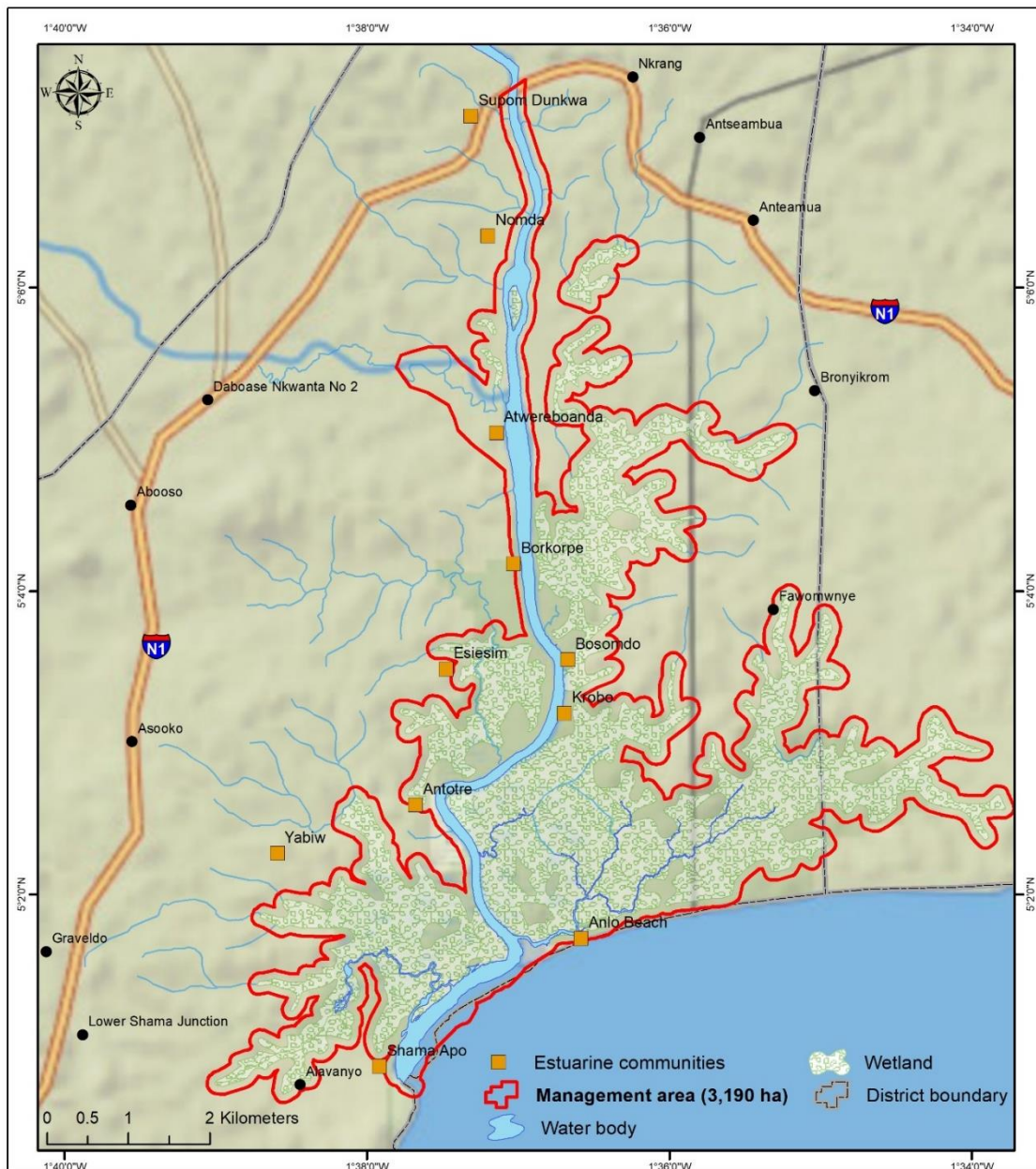


Figure 1: Map showing a designated management area of 3,190 Hectares

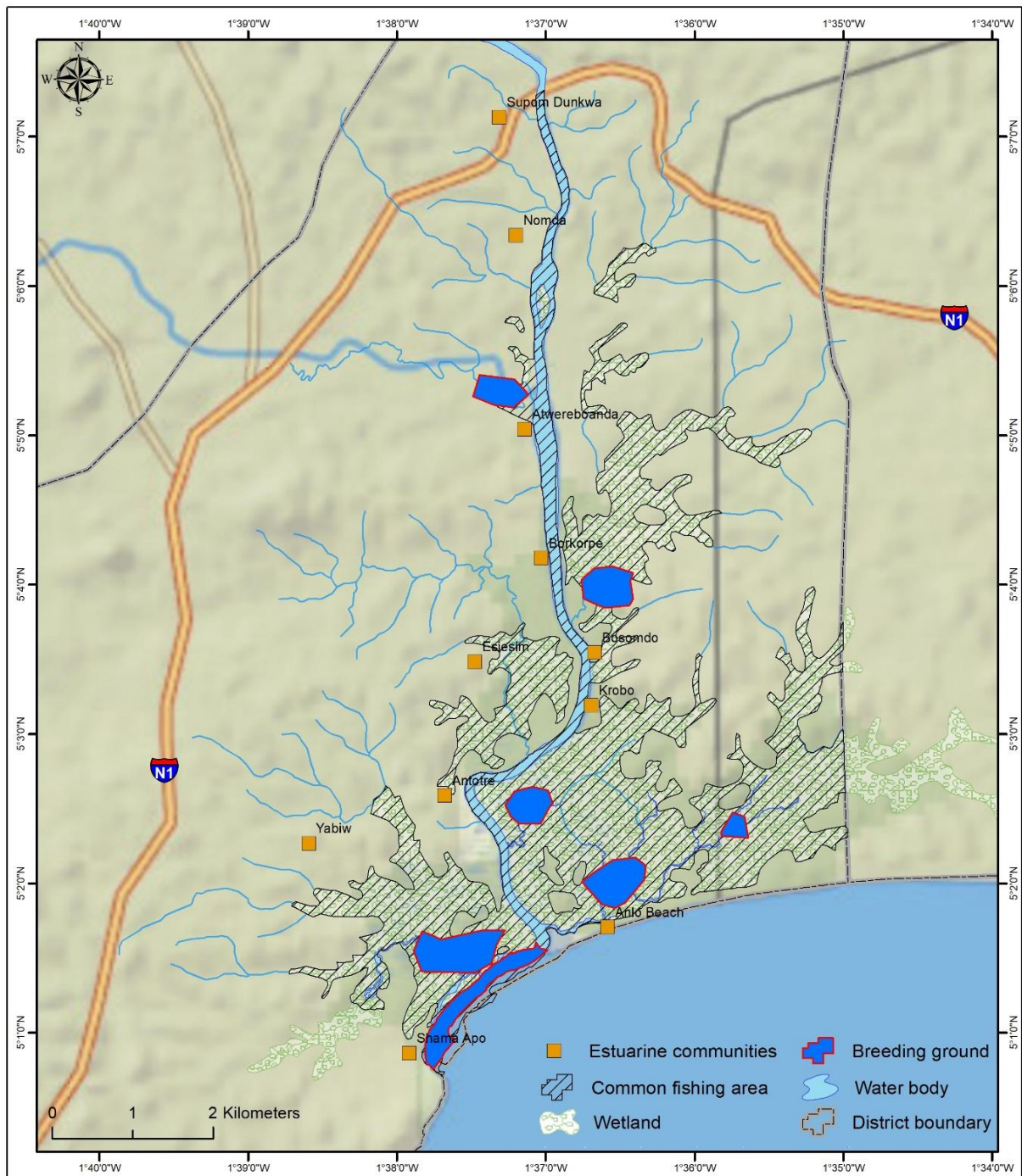


Figure 2: Map showing seven breeding grounds within the Pra fisheries management area

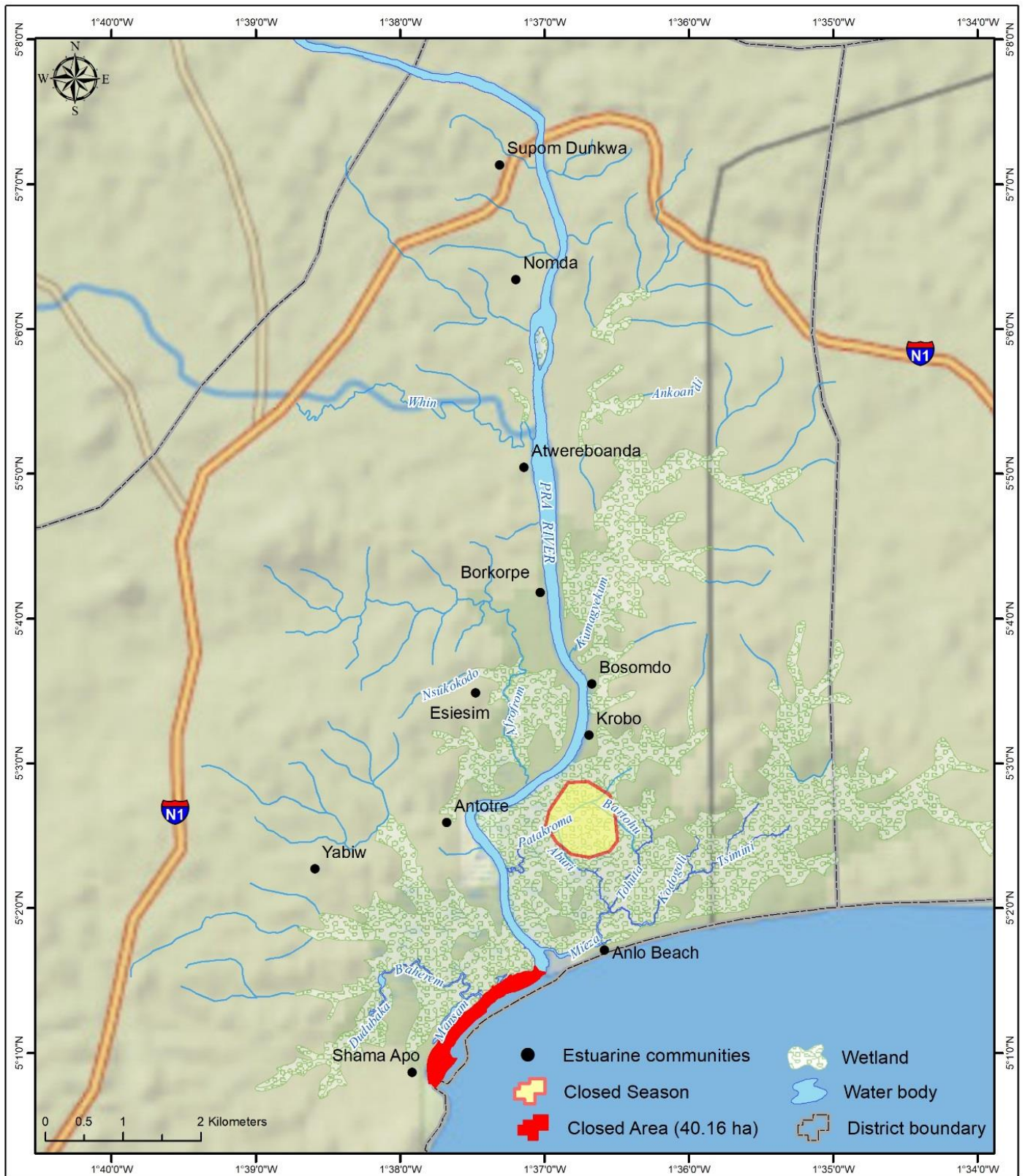


Figure 3: Map showing a seasonal closed area (shaded yellow)

1.1 Objectives of the Monitoring Visit

The monitoring visit was conducted and will continue in order to ensure that information provided by the co-management committee members are validated. The impromptu monitoring visits will be conducted at different times (including morning, afternoon, evenings, and at nights).

1.2 Expected outcomes

Expected outcomes of the workshop included:

- Photographs of the closed area taken
- Observations documented

SECTION 2 OBSERVATIONS OF MONITORING VISIT

The area was observed from two angles, one from the main road leading to the Anlo Beach community and the other from the Krobo community. From both angles, no person was observed fishing within the closed area, demarcated with painted bamboo sticks. From observations, it was also noted that there was no human disturbance or interactions in the area. Photos were taken from closer shots and also zoomed to observe far away interactions.



Figure 4: Beginning monitoring visits with interactions between FoN field officer, auditors and community representative



Figure 5: Picture Showing painted bamboo sticks that were used to demarcate the closed area



Figure 6: Showing zoomed picture with no fisherman observed in the closed area